

# Soprano



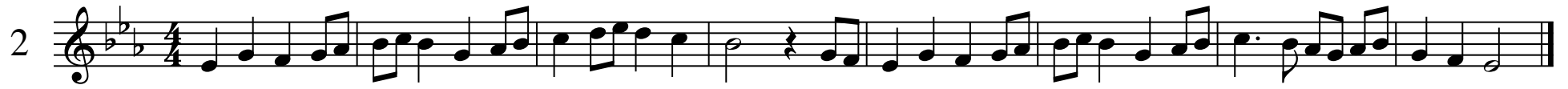
# Soprano

1



The image shows a single line of musical notation for a soprano part. It begins with a treble clef, a key signature of two flats (Bb and Eb), and a 4/4 time signature. The melody consists of 12 measures. The first measure starts with a half note G4, followed by quarter notes A4, Bb4, and C5. The second measure has quarter notes D5, E5, and F5, followed by a quarter rest. The third measure contains eighth notes G5, A5, Bb5, and C6. The fourth measure has eighth notes D6, E6, F6, and G6. The fifth measure features quarter notes G6, F6, E6, and D6. The sixth measure has quarter notes C6, Bb5, A5, and G5. The seventh measure consists of quarter notes F5, E5, D5, and C5. The eighth measure has quarter notes Bb4, Ab4, G4, and F4. The ninth measure contains quarter notes E4, D4, C4, and Bb3. The tenth measure has quarter notes Ab3, G3, F3, and E3. The eleventh measure features quarter notes D3, C3, Bb2, and A2. The final measure concludes with a whole note G2. The piece ends with a double bar line and repeat dots.

# Soprano



# Soprano



# Soprano

